

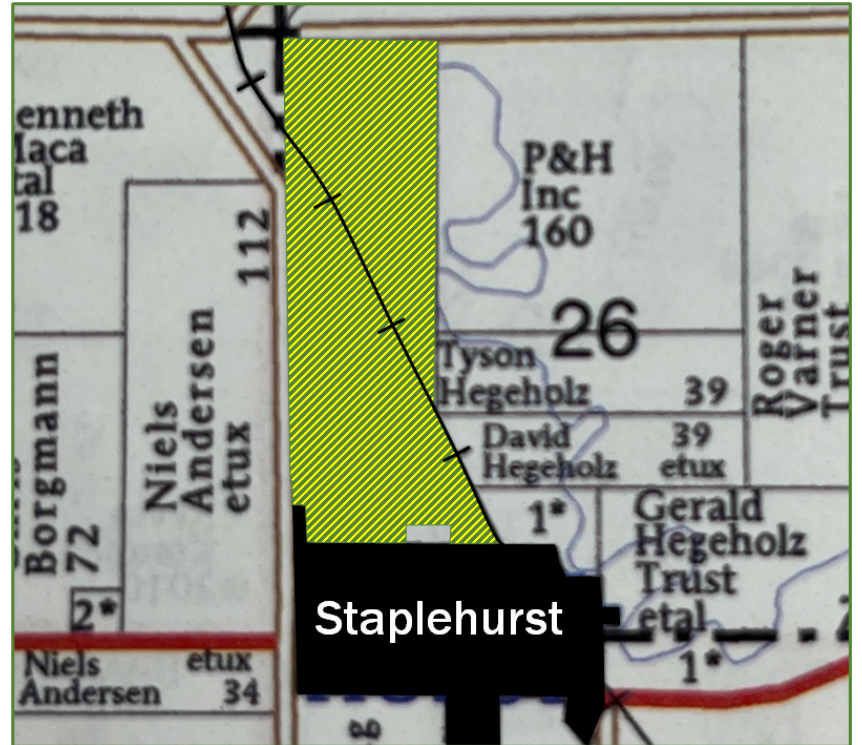
# LAND FOR SALE

Owner: Catherine Ingram

## SEWARD COUNTY

**132.96 Acres - 103.0 Tillable Acres**

**W1/2 NW1/4 & NW1/4 SW1/4 & LT 4 IN NE1/4 SW1/4 & LT 8 IN S1/2 SW1/4  
Section 26-12-2**



***CALL FOR PRICE!***

### Location:

Farm is located on the north side of Staplehurst. Good dryland producing farm with hunting potential.

### FSA BASE:

The present FSA bases are 52.2 acres corn with 134 bushel yield and 52.2 acres soybeans with 44 bushel yield.

**TERMS:** 10% paid on day of sale, balance at closing.

**POSSESSION:** Landlord possession at closing.

**TAXES:** 2023 and all prior taxes will be paid by the sellers.

**SALE APPROVAL:** Seller reserves the right to accept or reject all bids.

**2023 INCOME** Seller will receive all 2023 income.

All announcements day of sale take precedence over printed material. The information contained herein has either been given to us by the owner of the property or obtained from sources that we deem reliable. We have no reason to doubt its accuracy, but do not guarantee it. The prospective buyer shall verify all information contained herein.

***Call The Austin Company for information!***



## The Austin Company, Inc.

Farm Sales — Appraisals  
Management — Crop Insurance  
P.O. Box 70 • Milford, NE 68405  
Phone: 402-761-3361  
Bill White, Broker  
Trenton Volkmer, Salesman  
Ryan Beebe, Broker  
Offices: Milford & Imperial (Insurance Office)